

Annual Report FY22/23

# EXPANDING OUR IMPACT

LET'S END YOUTH  
HOMELESSNESS, *together*



**LIGHTHOUSE**  
FOUNDATION *for youth*



# CONTENTS

- 1 Acknowledgement of Country
- 2 Message from our Chairman and CEO
- 4 Inclusion and Diversity Statement
- 6 Message from our Founder
- 8 Our young people
- 10 Expanding our capacity and reach
- 14 Cindy's story
- 18 Lighthouse Institute
- 20 A Foundation you can trust
- 22 Thanking our community, committee members and volunteers
- 24 Program spotlight: Foster Care
- 26 Raising funds and achieving more together
- 30 Community and partner events
- 32 Partner collaboration
- 33 Purposeful partner spotlight: Natio
- 34 Thanking our philanthropic partners
- 35 Thanking our corporate partners
- 38 Our Board, Life Members, Patrons and Ambassadors
- 40 Community support

Photography: Marie-Luise Skibbe  
Graphic Design: Hulsbosch



## ACKNOWLEDGEMENT OF *Country*



Lighthouse Foundation acknowledges Aboriginal and Torres Strait Islander peoples as the Traditional Custodians of the lands across Victoria where our services are located and pay our respects to ancestors and Elders past and present.

Lighthouse Foundation is committed to honouring Australian Aboriginal and Torres Strait Islander peoples' unique cultural and spiritual relationships to the land, waters and seas and their rich contribution to our society.

The Lighthouse community has always been a strong advocate for reconciliation and as such, engages in shared learning with Aboriginal and Torres Strait Islander communities and people on an ongoing basis. We are expanding and formalising our commitment to reconciliation through the development of a Reconciliation Action Plan (RAP). As part of this process, Lighthouse is building stronger, more respectful and broad-ranging partnerships with Aboriginal and Torres Strait Islander individuals, organisations, and communities. The RAP will provide a framework for Lighthouse by which we can listen, learn and be guided by Aboriginal and Torres Strait Islander young peoples and their families, as well as Aboriginal and/or Torres Strait Islander owned and led organisations.

Artwork by Bayley Misfud



## MESSAGE FROM OUR CHAIRMAN AND CEO

This is a time for hope, and for recognising how far we have come. Despite the period of rapid change, Lighthouse Foundation has seized the momentum to go further to achieve our mission of ending youth homelessness.

A year ago, our Board committed to a bold three-year expansion strategy to increase our impact and significantly reduce the increasing population of homeless youth. We are proud to report that in this first year of implementation, Lighthouse Foundation has achieved 100% growth in the numbers of children and young people being supported through our programs. By empowering communities and expanding our care services, we are increasing our impact and accessing larger numbers of homeless and at-risk youth to tackle the growth of the problem.

We have responded to the evidence that shows early interventions are crucial in preventing predictable pathways to youth homelessness for vulnerable children, including those in less-than-ideal care placements. Our Secure Base, Foster Care and Family Support programs have grown, within an evidence-based, scalable framework, while maintaining Lighthouse's best-practice, quality care services to help more young people heal and thrive. Our Young Parents program, founded and supported by our Patron, Vicki Vidor OAM, remains a beacon of positive outcomes, showing that expected life trajectories can change for two generations at once, and that the first year of a baby's life will have impact on their whole lifetime.

Supported by passionate private philanthropy, our Community Connect program has achieved exceptional results in its first year in the Northern

region of Melbourne and is expanding to the Southern region and Peninsula in the year ahead. The Lighthouse Therapeutic and Transitional Homes remain a heartbeat of our organisation, providing a safe base for increasing numbers of young people to heal and complete their education, including young women escaping early and forced marriage and family violence. Our unique mix of programs offer flexible pathways for individuals that help them move towards fully independent living, while knowing they can always stay connected through our On For Life community.

This past year has seen an essential and significant investment in enhancing organisational capacity with increased staffing and improving and updating systems. In the year ahead, this investment will enable us to continue to focus on delivering quality, best practice care, and drive the expansion of youth services through collaboration with partners and empowered communities. The Lighthouse Institute has also secured growth through university partnerships and collaborations on pilot projects and research.

Thanks to our corporate partners, led by McCormack, our larger team has benefited from a refurbishment of our Youth Resource Hub at Cremorne, which also makes it more welcoming for our visiting young people and community activities.

A special thank you goes to our Patrons, Peter Edwards and Vicki Vidor OAM and the Victor & Loti Smorgon Charitable Foundation for their generous gifting of our Lighthouse Resource Hub. This not only provides us with our secure base that enables us to expand our work, but particularly provides the important sense of belonging for our young people that is the essence of Lighthouse's ethos. Alfasi Property also enabled Lighthouse to use a nearby property at 560 Church St, Cremorne as a much-needed additional meeting and training space for the organisation during the renovation.

We would like to take this opportunity to thank the Board, Susan Barton AM and all our incredibly hardworking Lighthouse team, Committee members, volunteers and our Lighthouse community who have worked so tirelessly to help achieve so many positive outcomes for our young people and Lighthouse this year.

Sincerely,

Len Warson  
Chairman  
Lighthouse Foundation

Dr Eamonn McCarthy  
CEO  
Lighthouse Foundation

## WE MADE AND ACHIEVED A PROMISE TO GROW BY 100% THIS YEAR

At Lighthouse Foundation, we provide homes and therapeutic care programs to children and young people impacted by long term neglect, abuse and homelessness. Our focus is to create caring communities where children and youth can feel safe, form meaningful relationships and begin to heal from traumatic experiences. Our Lighthouse Homes, Foster and Family Care and In Community care environments ensure our support reaches the children and young people who need it, where they need it, for as long as they need it.

## OUR VISION

**TO END YOUTH  
HOMELESSNESS**  
*together*

## VALUES

**RESPECT**

**KINDNESS**

**COURAGE**

**COLLABORATION**





# WE ARE DIVERSE AND INCLUSIVE

Lighthouse celebrates diversity and affirms the right of access, equity, and equality for every young person, employee, and volunteer in the Lighthouse community. Our organisation is inclusive of all sexual orientations and gender identities. We also practice from a position of cultural safety and awareness across diverse languages, religions, and cultures. We respect, respond, and continue to learn about the unique needs of our First Nations young people. Lighthouse recognises that all people with a disability have the right to be included in meaningful ways in our community. All Lighthouse programs are tailored to the needs of the young people and families we are working with.

## OUR COMMITMENT

Acknowledging that we practice on Aboriginal lands and create and support opportunities for cultural consultation, inclusivity, and leadership.

Creating and supporting equal opportunities for leadership, professional development, flexible work, and equal participation across cultural groups, abilities, sexual orientations, and gender identities.

Promoting an environment where we celebrate and share cultural practices and diverse identities throughout our community.

Valuing diversity in every aspect of the work through promoting a safe and culturally curious learning environment.

Engaging in practices that retain the organisational knowledge and develop the skills and experience of staff of all ages and demographics.

Creating a safe and responsive therapeutic environment around every young person in our care through Lighthouse's Model of Care.

### 1 NAIDOC MARCH AND COMMUNITY MURAL

Lighthouse Foundation proudly celebrated NAIDOC Week by marching and acknowledging the rich history, culture and achievements of Aboriginal and Torres Strait Islander Peoples.

### 2 WEAR IT PURPLE DAY

Lighthouse celebrated Wear it Purple Day and our aligned purpose to foster supportive, safe, empowering and inclusive environments for rainbow young people.

### 3 IFTAR CELEBRATION DURING RAMADAN

At our Iftar gathering our friends from Straight Up spoke about the importance of Ramadan in the Muslim faith, brought food for our Lighthouse young people and community, and performed prayer rituals after food.

### 4 MIDSUMMA FESTIVAL

A team from the Lighthouse Foster Care program joined the Midsumma Festival Pride March to show solidarity with the LGBTQIA+ community, including our children, young people, foster carers and staff.

### 5 DIWALI FESTIVAL OF LIGHT

Lighthouse community came together around the kitchen table to celebrate Diwali adorning the space with festive decorations, lighting candles, and enjoying traditional Indian street food and sweets.

### 6 CHRISTMAS AND END OF YEAR FESTIVITIES

Festive celebrations were a huge success at Lighthouse where children and young people gave and received gifts, made and enjoyed delicious food, and most importantly, shared time together when it can be especially challenging to be without family and to live with complex trauma.





## MESSAGE FROM OUR FOUNDER

It has always been the Lighthouse children and young people themselves who inspire and motivate me. Each day, I am privileged to witness acts of astounding courage as some of our community's most abused and neglected children and young people take steps forward, doing things that scare them, and that they feel they may fail at. These things may seem small to others, but we know they are a huge deal for that young person. We celebrate these achievements enthusiastically, with frequent gatherings and parties which build self-esteem and confidence. The kitchen tables in the homes and in our Youth Resource Hub are usually the centre of the action. We eat together and laugh, cry and talk together.

I am grateful to everyone who has played a part in helping us support these precious young lives, especially the dedicated Care Team at Lighthouse who always go above and beyond expectations to keep our young people safe, happy, and thriving.

Our supporters have also risen to the challenge of these difficult times. There are rising mental health crises in this third year of the pandemic. Family violence has increased and the higher cost of living is pushing more children, young people and families to the brink of homelessness. Yet our supporters have achieved more than ever before in fundraising and contributions.

Caulfield Grammar School support Lighthouse to provide safe accommodation for our young people. Alfasi Property contributed a useful meeting and training space. The Property Industry Foundation continued their exceptional commitment towards providing housing for children and youth in need by commencing renovation of another one of our large suburban homes. A dynamic group of 'Ten Women' in the property industry raised an astonishing amount of funds through a luncheon to support this construction project and the Young Women's Freedom program. Corporate friends at MICM and Glenvill raised funds through events, and generous companies like Provincial and T.House threw their support into furnishing our newly set up homes. Several new families joined our loyal group of philanthropic supporters, enabling new programs to begin, and the impact of our work to succeed in doubling, in a single year.

Each one of these young people has a journey ahead of them, and the Lighthouse community of support is giving them a boost forward into reaching their potential. A smartly dressed young man in his mid-20s recently came into the Youth Resource Hub to show us his uniform and let us know that he was moving overseas, as his role as an airline Senior Cabin Manager would now be based in Europe. He was bursting with confidence and pride. Many of our team recalled him as an anxious teenager, and the struggles at that time with school, and relationships with carers and fellow housemates. His first part-time job at Aldi was the beginning of his upwards progress. This has been achieved through his courage and with the support of a safe Lighthouse home base and nurturing routines of the household.

To all our supporters, please always know that your commitment to step up for these young people makes a real difference to each young life. We are now going into the next year of our three-year growth phase with increasing confidence and hope that we will positively impact more young people, and do this through growing our cooperative, engaged community.

With heart,

*Susan Barton*

Susan Barton AM,  
Founder, Lighthouse Foundation

# WE EAT TOGETHER AND LAUGH, CRY AND TALK *together*





# OUR YOUNG PEOPLE

The children and young people in our care have experienced abuse, neglect and childhood trauma and are considered to be some of Australia’s most vulnerable youth. Very rarely do these young people become homeless by choice. Many have fled or been forced out of their homes due to family violence, breakdowns, struggles with mental health and addiction or judgement due to religion and/or sexual orientation.

When young people find the courage to come to Lighthouse, we welcome them with respect, compassion and unconditional love to help them heal from the trauma of their past. With the support and guidance from Lighthouse carers, therapeutic support and community, some children and young people heal and thrive within a short period of time, while others may need years.

15% ABORIGINAL AND/OR TORRES STRAIT ISLANDER



5% REFUGEE BACKGROUND

18% CULTURALLY AND LINGUISTICALLY DIVERSE (CALD)



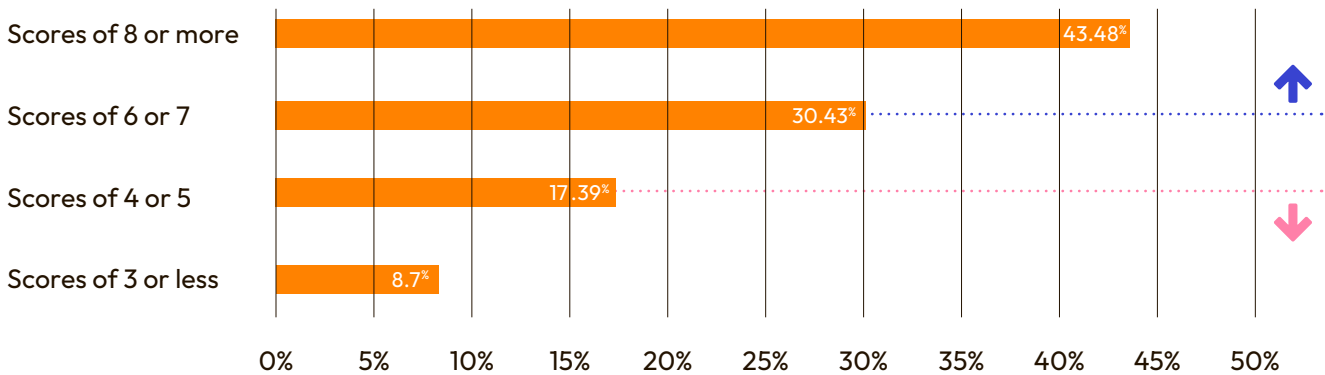
90% YOUNG PEOPLE IN LIGHTHOUSE PROGRAMS ARE EITHER IN EDUCATION OR EMPLOYMENT

## DID YOU KNOW?

7+ The majority of Lighthouse Foundation young people have Adverse Childhood Experiences (ACE) Score of 7 or more.

<4 90-95% of the general population score lower than 4.

% of Young People’s Adverse Childhood Experiences (ACE) Score (within 22-23 Financial Year)





# WE'VE BEEN EXPANDING *our capacity* AND REACH

Our young people are at the heart of everything we do. This year, we're proud to report that Lighthouse Foundation has taken care of a record number of young people, foster and kinship families. Your support has never been more important.

## CARE



**1,230+** YOUNG PEOPLE  
ARE PART OF OUR LIGHTHOUSE ON FOR LIFE COMMUNITY

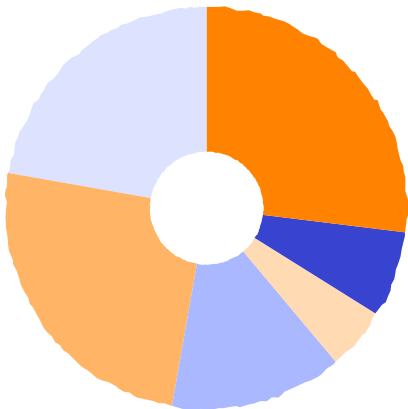
**7** WERE SUPPORTED CLOSELY WITH CASE MANAGEMENT IN THE PAST YEAR



WE'VE CARED FOR  
**131** YOUNG PEOPLE  
THIS YEAR

**77** WERE WELCOMED INTO LIGHTHOUSE PROGRAMS

**54** MAINTAINED IN OUR PROGRAMS, RECEIVING ON-GOING SUPPORT



DISTRIBUTION OF PROGRAMS

27%	Foster care
7%	Family Supports
5%	Secure Base
14%	Therapeutic
25%	Transitional
22%	Community Connect



## COMMUNITY



**508+** VOLUNTEERS DONATED TIME AND TALENTS



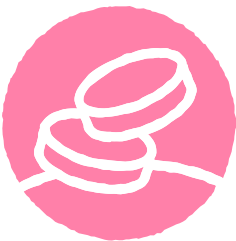
COMMUNITY COMMITTEES

**9** CIRCLES OF VOLUNTEERS SURROUNDING LIGHTHOUSE HOMES AND HUBS

**20+** COMMUNITY EVENTS HELD IN OUR HOMES AND HUBS

**5** STUDENT PLACEMENTS

**1** MAJOR RENOVATION OF OUR YOUTH RESOURCE HUB



**1000+**

PEOPLE LIKE YOU, DONATED TO SUPPORT OUR WORK ENSURING HIGH QUALITY CARE OPERATIONS TOOK PLACE FOR YOUNG PEOPLE IN NEED



**74**

LIGHTHOUSE KEEPER REGULAR DONORS KEPT THE LIGHTS ON IN OUR LIGHTHOUSE HOMES





# EXPANDING OUR CAPACITY AND REACH

## CHILD SERVICES



48 CHILDREN SUPPORTED

7 SECURE BASE      31 FOSTER CARE      10 FAMILY SUPPORT



## LIGHTHOUSE HOMES AND HUBS

3 NUMBER OF LIGHTHOUSE HOMES      24 NUMBER OF FOSTER AND KINSHIP FAMILY HOMES      1 LIGHTHOUSE NORTHERN CHILDREN AND FAMILIES HUB

52 FOSTERING PLACEMENTS PROVIDED — RESPITE, EMERGENCY, SHORT, LONG      7 NEWLY ACCREDITED FOSTER CARER HOUSEHOLDS — 22 FOSTER FAMILIES TOTAL



2,524 DAYS OF FOSTERING SUPPORT



## YOUTH SERVICES



12 LIGHTHOUSE HOMES

INCLUDING OPENING OF FRANKSTON AND GLEN IRIS HOMES

90% YOUNG PEOPLE ENGAGED IN EDUCATION AND EMPLOYMENT      60,000+ HOME-COOKED MEALS PROVIDED



THERAPEUTIC AND TRANSITIONAL YOUNG PARENTS AND BABIES PROGRAM:

8 NUMBER OF LIGHTHOUSE HOMES      10 NUMBER OF BABIES      0-5 YRS CHILDREN'S AGE RANGE

23,000+ APPROX NUMBER OF NAPPIES & PULL-UPS USED      3 CHILDREN ENGAGED IN EARLY CHILDHOOD EDUCATION



THERAPEUTIC AND TRANSITIONAL YOUNG WOMEN'S FREEDOM PROGRAM:

8 YOUNG WOMEN AND GIRLS SUPPORTED      16-24 YRS AGE RANGE      8 LANGUAGES SPOKEN/LEARNT



COMMUNITY CONNECT:

800+ KILOMETRES TRAVELLED AROUND MELBOURNE TO SUPPORT YOUNG PEOPLE      6 REGIONS LIGHTHOUSE COMMUNITY CONNECT TEAM SUPPORTED      13 REFERRAL NETWORKS







**OUR YOUNG PEOPLE  
ARE OUR GREATEST**  
*inspiration.*

**WE BELIEVE THAT  
EVERY YOUNG  
PERSON DESERVES  
A SAFE AND LOVING  
HOME.**







## CINDY'S STORY

Meet Lucinda, or as she's lovingly known in the Lighthouse community, Cindy. A little over two years ago, Cindy was facing one of life's toughest challenges – pregnant with her second child and couch surfing. It was a time of despair, uncertainty, and instability. After being referred to Lighthouse by Child Protection, her and her newborn son, Jackson, were welcomed into Lighthouse's therapeutic Young Parent & Babies program.

It wasn't an easy start. She grappled with anxiety, and her past traumas made it difficult for her to connect with her precious son. "I was worried about bonding with Jackson and was nervous I wouldn't be able to form a connection with him" she says.

However, within the loving embrace of our dedicated Therapeutic carers, Cindy found the unwavering support she so desperately needed. They not only provided consistency and reliability but also a safe and nurturing home she had never experienced before. A maternal nurse visited frequently, guiding Cindy in learning new skills as a mother and nurturing a bond with Jackson. The transformation that followed was nothing short of magical.

From a place of nervousness and hesitation about holding and showing affection to her baby, Cindy blossomed into a confident and self-assured mother. The special moments shared with Jackson, including his very first steps and first words, built upon the strong bond the two developed throughout their time at Lighthouse.

**"Lighthouse has been a beacon of support during the toughest chapters of my life."**

Cindy's progress eventually led her to Lighthouse's Transitional Home – a significant step towards her personal growth and independence. "I was initially worried about not having the Carers around 24/7 but I learnt how to do important things by myself for Jackson which was really important. I loved cooking dinner for the house," said Cindy. While the transition was daunting, she discovered comfort in one-on-one sessions with her Carers and the incredible support of the Lighthouse community committees.

The heartwarming part of this story lies in the strength of the community that rallied around Cindy and Jackson that showed her that they were constantly being held in mind. A trip to the hospital became an opportunity for her to witness the true spirit of Lighthouse when a member of the community committee stepped up to take care of Jackson, cook dinner, and even clean their home, all while Cindy recovered.

Over two years with Lighthouse, Cindy and Jackson's development was inspiring. They were ready for their next chapter, making the move to Mildura and living happily together as a family. Staying true to our promise, our Therapeutic carers helped Cindy and Jackson with their move and made sure they were settled into their new loving home, like any caring family unit would.

Manager of Youth Services at Lighthouse, Ben, shares, "I have had the incredible privilege of witnessing Lucinda overcome immense challenges and grow into a remarkable young woman. Her journey fills me with an overwhelming sense of pride."

We understand that the road to healing is not always easy, but together, we can make a difference to young vulnerable lives when they need us most.

We are forever grateful for our long-standing Patron and Life Member, Vicki Vidor OAM, who generously supports our Young Parents and Babies Program.







# LIGHTHOUSE *institute*

## alfasi property

The Lighthouse Institute has experienced a revitalisation in the past year, with agreements locked in for several projects and developments including a research and training partnership with Monash University. Thanks to the generous support of our corporate partners at Alfasi Property, we now have a dedicated training space at 560 Church Street, Cremorne. This space has proven invaluable, serving both our internal and external needs, and greatly assisting us in fulfilling our mission. Our Institute has also begun to expand our reach and influence in the field, by presenting at conferences, including the NSW Anti-Slavery Commission and Adult Migrant English Program (AMEP) amongst others.

Lighthouse has placed a strong emphasis on the growth and development of our staff and caregivers. We're proud to report that we provided training to 111 of our staff members and an impressive 409 individuals from outside our organisation. These training sessions covered a wide range of important topics, including the Model of Care, LGBTQIA+ Training, and Healing Connections. This reflects Lighthouse Foundation's ongoing dedication to enhancing the well-being of all.

Thank you to Moran and the Alfasi family for their ongoing generous support.

## TRAINING FOR OUR FUTURE



# 520+

INDIVIDUALS WERE TRAINED BY  
LIGHTHOUSE INSTITUTE IN PAST YEAR

## 111

Internal team  
and volunteers

## 409

External  
community



# 12

LIGHTHOUSE INSTITUTE  
TRAININGS

Only active for 2 months  
of this reporting period

## 4

Internally facilitated  
training sessions for  
Lighthouse employees

## 3

Externally facilitated  
training sessions for  
Lighthouse employees

## 2

Externally facilitated training session for external  
community (hired out space to them)



# 16

CONFERENCES AND ADVOCACY  
EVENTS ATTENDED

## 3

Institute presentations  
at conferences

## 2

Corporate events for  
external community

## 13

Events and conferences that Lighthouse's CEO,  
Dr Eamonn McCarthy spoke at on behalf of  
Lighthouse Foundation



LIGHTHOUSE RESEARCH AND TRAINING  
HOSTING EMPLOYEES AND EXTERNAL  
COMMUNITY MEMBERS

# 1

- Research and Training partnership with Monash University
- Safer Communities Federal Grant Literature Review
- Evaluation and Outcomes Expansion Project



# A FOUNDATION YOU CAN *trust*

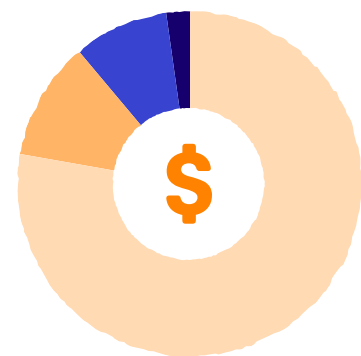
This has been a year of accelerated growth, in which we have succeeded in doubling our impact. An increased investment from our donors and supportive partnerships have made this expansion possible.

Thank you to the hundreds of kind individuals and businesses who have donated to Lighthouse Foundation in the last year. Every donation makes a positive and lasting impact.



## WHERE OUR \$'S GO

Expenses

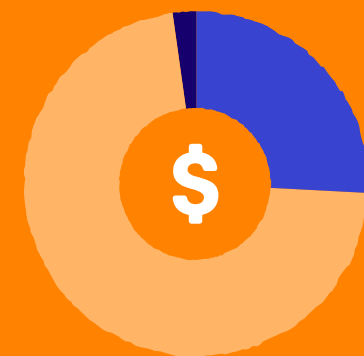


	78%	Programs
	11%	Fundraising
	9%	Administration
	2%	Lighthouse Institute

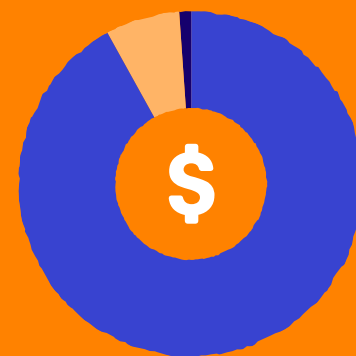
## WHERE OUR \$'S COME FROM

Child-focused Services

Youth-focused Services



	26%	Philanthropic & general donations
	72%	Government Funding
	2%	Lighthouse Institute



	92%	Philanthropic & general donations
	7%	Government Funding
	1%	Lighthouse Institute



Thank you to Pitcher Partners who proudly audit our financials annually, pro bono.



## SAFE-GUARDING OUR FUTURE

Lighthouse successfully passed all quality governance and care services standards following the three-yearly accreditation process completed in October 2022. The accreditation process measures whether an organisation actively encourages and resources quality innovation and improvements and has formal and informal mechanisms in place to reflect on, evaluate and improve work practices.



### LIGHTHOUSE HAS OBTAINED AND MAINTAINED ACCREDITATION FOR THE FOLLOWING:

- Quality Improvement Council Health & Community Services Standards, focused on governance and management systems
- Human Services Standards, focused on quality service delivery

"The clarity and strength of the organisation's purpose, vision and values are embedded in the Model of Care. It is strongly formulated and theoretically sound, and is well understood and articulated across the organisation with consistency and passion."

"There is a well embedded culture of reflection, learning and development, and emphasis on empowering and skilling staff so intervention is consistent and ever present."

"Lighthouse Foundation has a high level of integration across their organisational systems for risk, compliance, and quality management."





# THANKING OUR COMMUNITY, COMMITTEE MEMBERS AND VOLUNTEERS

## VOLUNTEERS ENRICH EVERYTHING WE DO

Lighthouse Foundation has been supported by a dedicated community of volunteers since we first began in 1991. Our volunteers are an essential element of Lighthouse's establishment, growth and Model of Care. Lighthouse was supported by more than 500+ volunteers this past year including working with several corporations who offer volunteer staff to help our foundation. Each of these volunteers supports our programs and young people in a variety of ways – helping to upkeep our residential homes, fundraising and assisting at events, completing various tasks in our Homes and Hubs.

Thank you to Lighthouse's nine active Community Committees located across Melbourne who play a vital role in supporting our young people in many varied ways. From dropping off food, mentoring, and developing young people's life skills to helping carers integrate into their local communities and fundraising through events like garden parties and sausage sizzles they are a vital part of our community-integrated Model of Care. We're truly overwhelmed by every Committee Member's enduring commitment and generosity.

## COMMITTEE CHAIRS

Bonbeach: Briony Jones  
Clayton: Louisa Durbin  
Coburg: Anna Houlahan  
Frankston: Mary Bailey  
Heathmont: Michelle Power  
Kensington: Kristen Harrison  
Malvern East: Catherine Green  
Reservoir: Jacqui Lea



## PHILLIP ISLAND ANNUAL CAMP

Our annual Lighthouse Camp returned in September 2022, after a two-year hiatus due to COVID-19, thanks to the generous support of Scotch College. Held on the donated camp grounds of Scotch College camp at Phillip Island over a weekend, 34 children and young people came together with more than 20 Lighthouse team members. The young people really enjoyed participating in many fun activities including a talent show and trivia evening hosted by a former young person.

Steve, who is a regular at our Lighthouse camps, provided a Welcome to Country and held a smoking ceremony which the young people loved. Nature lovers went on a walk to the nearby koala sanctuary while another group stayed and got creative, painting a beautiful piece of artwork to hang in the Youth Resource Centre.

Camp is a wonderful opportunity for our young people and Lighthouse team members to connect with each other and have fun. This year, some young people who were only just about to move into their Lighthouse home attended and made friends and connected with their community, which is exactly the purpose of camp at Lighthouse.



“Camp is a wonderful opportunity for our young people and Lighthouse team members to connect with each other and have fun.”

“The Therapeutic Program at Lighthouse plays a crucial role in supporting at-risk youth to overcome trauma and cultivate essential practical, emotional and interpersonal life skills. With a demonstrated track record, this diverse program that includes an annual camp, effectively prevents youth homelessness and empowers young individuals to heal and flourish as they transition into independent living.”

Lighthouse Foundation's Director of Care Services,  
Daniel Durik





## PROGRAM SPOTLIGHT: FOSTER CARE

### FROM LITTLE THINGS, BIG THINGS GROW

We're excited to reach some monumental milestones in Foster Care as we enter our fourth year since launching our Foster Care program.

An integral part of the Foster Care and Family Support program is the access to community made possible through the Hub Home, where the team host events and activities for children and young people with their caregivers. Events and Easter activities were held which included many ball games, jumping on the trampoline, arts and crafts, and baking. Children, young people, and staff enjoyed busy days of activities and building connections.



## REAL LIFE STORY: FOSTERING CHILDREN AND YOUNG PEOPLE TO HEAL AND THRIVE

This year, Lighthouse had the pleasure of welcoming a 10 year-old girl into our Foster Care program. She had been through more than most, facing levels of trauma and mental instability that no young person should experience. At first, she was understandably cautious about accepting support.

Before coming to Lighthouse, she had been in the hospital and then an emergency residential facility, where she spent a lot of time watching TV, eating junk food and struggling to spend more than an hour a week at school. She had been described as "difficult to manage and displaying aggressive behaviour". Recognising her need for specialised care, Lighthouse's Foster Care program ensured that our team of Foster Carers were well-prepared with the knowledge and skills needed to provide her with the wrap-around care she required. We also had the invaluable support of our Hub Home.

When she first arrived, consistency with school felt almost out of reach. Our therapeutic staff stepped in to assist her in getting ready for school each day and accompanied her from the Foster Carers' home.

Over time, with their consistent support, she began attending school for half days, five days a week. Our therapeutic staff played a crucial role in providing stability and support during challenging moments.

On days when school felt overwhelming, she found comfort at the Hub and in the presence of her new support system. There, she engaged in various activities like working on homework books, swimming, playing outdoor sports, and even learning to cook. It was truly heart-warming to see the transformation in this young girl during her time with us. She shed her initial labels of being difficult and displaying aggression, revealing her joyful side with an infectious laugh and a bright smile.

She formed nurturing and caring relationships with everyone she met at the Hub, who she still visits regularly. During her time with us, she learned about reliable and predictable boundaries and experienced the presence of safe and caring adults in her life.

It's been a beautiful journey, watching her grow and thrive, and our entire Foster Care team is grateful to have been a part of the positive steps taken in her life.

## IT'S BEEN A BEAUTIFUL JOURNEY, WATCHING HER GROW AND *thrive.*

Lighthouse Foster Care team member



# RAISING FUNDS AND ACHIEVING MORE *together*

## LARAPINTA ADVENTURE

In May, 13 dedicated trekkers experienced the adventure of a lifetime on the Larapinta Trail through the heart of the Australian Outback to raise vitally needed funds for Lighthouse. The group journeyed along red rock ridges, while immersing themselves in the rich history of the traditional custodians. Through challenging themselves mentally and physically, like many young people experiencing homelessness are forced to do daily, they raised an incredible \$66,000+ for Lighthouse.

**Please contact Lighthouse for your next adventure on (03) 9093 7500 or [reception@lighthousefoundation.org.au](mailto:reception@lighthousefoundation.org.au)**



## MCCORMACK

### LIGHTHOUSE YOUTH RESOURCE HUB REFURBISHMENT – A WELCOME NEW SPACE FOR ALL

In early 2023, our dedicated partners at McCormack and their construction community undertook a major renovation of our Youth Resource Hub in Cremorne to place a greater emphasis on our young people and facilitating future growth.

As a result, we now have increased capacity and dedicated spaces for collaboration and community events. The number of clinical, care, and administrative teams operating from the Hub has doubled within the limited footprint, while we've managed to retain our welcoming feel with the kitchen table at the centre of the space still the heart of it all.

This Hub now allows us to hold more group activities with our young people including art therapy and cooking sessions, as well as having a dedicated youth-friendly 'chill space' downstairs. The interior was revamped with new rooms, carpets, ergonomic and stylish furniture, decals, fresh paint and décor to create an inviting atmosphere, instilling a sense of warmth and comfort for our young people and team while also enhancing the functionality of the space. We are truly thankful that our young people can now enjoy a greater sense of belonging in this rejuvenated space.



#### Thanks for all your support:

- Our builders and designers from McCormack.
- Loti and Victor Smorgon Foundation for generously gifting us our Youth Resource Hub space many years ago.
- Pinnacle Charitable Foundation and Spheria Asset Management for providing funding for the project.
- T.House, Provincial Home Living, Globe West and HOW Group for contributing exceptional furniture and décor and Hali rugs.
- StudioHawk for sharing their office space for our teams to work from during the refurbishment.
- RedZed for custom electronic welcome signage.
- Third Space Studios for creating the highlight video reel encapsulating the essence of our Hub enhancements.
- Thanks to all our generous pro bono supporters and suppliers who made our hub so modern, yet homely.





### A DAY ON THE GREEN AT ROYAL MELBOURNE GOLF CLUB

Lighthouse held its inaugural golf day at Royal Melbourne Golf Club in May. Over 70 players teed off for 18 rounds on the fifth best golf course in the world and were joined by pro golfers, Chris Donovan and Mark Stephens who offered their expertise by taking a pro shot for the teams. You could feel the warmth in the room, with attendees and sponsors showing a great amount of generosity and support for Lighthouse, raising over \$65,000+. We're excited to see this special Golf Day is now becoming an annual Lighthouse event.

### NATIONAL CAR RAFFLE

Lighthouse held a national car raffle this year, thanks to our partners, Zagame Automotive, giving ticket purchasers the chance to win an Audi Q5 worth \$98,000 or \$5,000 Provincial Home Living voucher. For just \$40 each, every ticket purchased helped us continue to positively change the lives of young people in our care, and we raised \$74,000+ in total. The two winners were thrilled to receive their prizes, and we thank them, and everyone else who bought a ticket to support this raffle.



**"WE DEEPLY VALUE  
ALL OUR EVENT  
SPONSORS, LIKE  
FGX, WHO STEP  
FORWARD TO  
MAKE *impactful*  
SOCIAL CHANGE."**

Dr Eamonn McCarthy, CEO, Lighthouse Foundation

### THANK YOU TO OUR PROUD EVENT SPONSORS OF LIGHTHOUSE'S ANNUAL GOLF DAY

Gold



Silver



Bronze



Hole



Pro-clinic







# collaboration

## BETWEEN THE COMMUNITY AND PARTNERS SPARKS EXCITING OUTCOMES



### OUR COMMUNITY AND PARTNER EVENTS



#### MICM GALA LEADS THE WAY

Our new corporate partners, MICM, hosted a gala event at The George on Collins in support of Lighthouse in May. Hearing from our inspirational Founder, Susan Barton AM on 'corporate parenting' – how looking after children, especially those experiencing homelessness, is everybody's responsibility, the room of MICM staff and clients responded by raising over \$95,000.

#### SCHOOLS TAKE ACTION

Thanks Kilvington Grammar, Lowther Hall, Caulfield Grammar, Chelsea Heights Primary and McKinnon High for running marathons, baking cakes, hosting carnivals, collecting coins and taking action – your combined efforts in multiple fundraisers has raised more than \$34,000 for Lighthouse.

#### CAULFIELD GRAMMAR SCHOOL SUPPORTS LIGHTHOUSE'S YOUNG WOMEN'S FREEDOM PROGRAM

Thank you to Caulfield Grammar School for their generous support of Lighthouse's Young Women's Freedom Program which provides safe homes for young women escaping forced marriage, modern slavery and other forms of gender-based violence.



#### T.HOUSE HELPS US MARK A MILESTONE

A group of Lighthouse Corporate Partners and supporters attended a spectacular lunch to acknowledge and celebrate 30+ years of Lighthouse and to mark Youth Homelessness Matters Day in April. The event was organised and generously hosted by T. House founder Tina Nettlefold, and MCed by Lighthouse Patron, Jo Stanley.

Guests heard from former Lighthouse young person, Christine, who shared her powerful story telling the positive impact Lighthouse has had on her life over many years.

#### SHOOTING HOOPS FOR YOUTH

Four Hoops for Homeless rounds took place at Waverley, Nunawading, Frankston & Districts and Chelsea basketball associations raising a combined \$81,000+. Junior teams proudly wore Lighthouse socks and purchased drink bottles to show their support for youth, with BBQs and awareness activations run by dedicated volunteers.





# COMMUNITY AND PARTNER *collaboration*



## GLENVILL DEVELOPMENTS

### GLENVILL GOLFERS DAY ON THE GREEN

On a sunny day in February, long-standing Lighthouse supporter and partner, Glenvill Developments, hosted a charity golf day at Latrobe Golf Club in Alphington to enjoy a day on the green. Over 130 attendees, including special guest speaker, Lighthouse Chairman and Glenvill CEO, Len Warson, collectively gathered to support our mission. More than \$77,000 was raised on the day. It was a spectacular fundraising outcome.



## officeworks

### OFFICEWORKS 'MAKE A DIFFERENCE' APPEAL

Lighthouse was chosen as one of 15 not for profit organisations from across the country to take part in the Officeworks 'Make a Difference' Appeal. Together with their customers' donations at checkout, Officeworks was able to gift an outstanding \$55,000+ to help us continue providing essential therapeutic care and support.

### 'LIGHT PREVAILS' SUBMITTED IN THE PRESTIGIOUS ARCHIBALD PRIZE

A foster carer and talented artist, Fedor Dokumentov, felt so inspired by the work our Founder, Susan Barton AM, has done to help children and carers across Australia, that he chose to paint her portrait and submitted it into the Archibald Prize. Entitled 'Light Prevails', the name was derived from a Gandhi quote and is based on the belief that people are good at their core and light will always win in the battle with darkness. This belief helps to overcome hard times.

Lighthouse was proud to be part of this prestigious art submission, providing an opportunity to promote our work to new audiences. This magnificent piece now hangs in our Youth Resource Hub.



NATIO  
NATURAL AUSTRALIAN BEAUTY

## PURPOSEFUL PARTNER SPOTLIGHT

Lighthouse officially welcomed Natio as a major corporate partner this year. Our Founder, Susan Barton AM and Natio's Founder, Max Ross, have a long-standing relationship going back to the early 90's, when Max was a mentor to one of Lighthouse's first young people. Since then, Natio has provided our young people with impactful work experience and in-kind donations.

Natio launched our purposeful partnership at their Birthday Gala in February where Max's band, The Groop, entertained over 200 guests. It was a special celebration of a collaborative partnership.

Following the Gala ball, Natio launched their new Kids range, helping us raise vital funds by giving customers the option to donate at checkout on the Natio website. They've also been gifting products and delivering skincare and makeup workshops to young people in our care helping to build their confidence.



Lighthouse's Founder, Susan Barton AM with Natio's Founder, Max Ross and Natio's Managing Director, Mahesh Ross

**"Natio's Founder, Max, held the hand of one of Lighthouse's vulnerable young people at their greatest time of need and his direct support changed this person's life. We trust that he, and the Natio team, will continue to hold our hand on the journey of ending youth homelessness together."**

Susan Barton AM



# thank you FOR YOUR VITAL SUPPORT

## PHILANTHROPIC PARTNERS

Lighthouse is deeply appreciative of the commitment of our Philanthropic Trusts and Foundations, supporters, and long-standing donors.



Leonie Van Raay



THE VICTOR  
SMORGON GROUP



Vicki Standish Family  
Foundation

Vicki Vidor OAM

ACME Foundation  
Allan Myers AC, KC and Maria  
Myers AC  
All Souls Opportunity Shop  
Association of Financial  
Advisers Foundation  
Amethyst Initiative  
Arnold Wittner  
Australian Communities  
Foundation  
Australian Philanthropic  
Services Foundation  
Australian Unity Limited  
Bagot Gjergja Foundation  
Bardas Foundation  
Bowden Marstan Foundation  
Brett and Barbora Williams  
Brian M Davis Charitable  
Foundation  
Bruce Parncutt Family  
Foundation  
Burdekin Foundation  
Caulfield Grammar School  
Charles Tegner  
Charterfalls Pty Ltd  
City of Greater Dandenong  
City of Kingston

David and Leonie Koadlow  
Department of Families,  
Fairness and Housing  
Department of Social Services  
The Dion & Sandra Abrahams  
Endowment  
Equity Trustees  
Eva Gurman  
Flora and Frank Leith  
Charitable Trust  
Frankston City Council  
Future Generation Investment  
Company (FGX)  
Hardware Foundation  
Herbalife Nutrition Foundation  
Ian Silk  
Inner North Community  
Foundation  
Isobella Foundation  
Jack and Ethel Goldin  
Foundation  
John Downer AM and  
Rose Downer AM  
Jan and Jeff Oughton  
Kids in Philanthropy  
Leonie Van Raay  
Lendlease FutureSteps

Lord Mayor's  
Charitable Foundation  
Lottery Office  
Make A Difference Group  
Magistrates' Court of Victoria  
Marcus Thomas Family  
Foundation  
Matana Foundation  
Mercy Foundation  
Merwe Laws Foundation  
Mona Georgina Harris  
Perpetual Charitable Trust  
Neary Family Foundation  
Noonan Family Foundation  
Orloff Family Charitable Trust  
Pethard Tarax Charitable Trust  
Pegasus Legacy Trust  
Pierce Armstrong Trust  
Pinnacle Foundation  
Portland House Foundation  
Property Industry Foundation  
Purcell Family Foundation  
Quinn Johansson Family  
Foundation  
Ray and Margaret Wilson  
Foundation  
Ralph Todisco

Randall Foundation  
Reid Malley Foundation  
Rick McKenna Entertainment  
Rotary Club of Melbourne  
Seedling  
Senza Nome Charitable Fund  
South East Water  
Spheria Foundation  
Spotlight Foundation  
Stephen and Jane Hains  
Tauber-Troeth Foundation  
The Myer Foundation  
The Piers K Fowler Trust  
Transurban  
Valerie Osbourne  
Vicki Standish Family  
Foundation  
Vicki Vidor OAM  
Victor and Loti Smorgon  
Charitable Fund  
William Angliss (Victoria)  
Charitable Fund  
Yardi Systems

## SUPPORTING OUR PARTNERS ACHIEVE THEIR ESG SOCIAL IMPACT GOALS

**"WE ARE PASSIONATE SUPPORTERS OF LIGHTHOUSE  
FOUNDATION AND GRATEFUL FOR THE SOCIAL BENEFIT  
GOALS THAT WE ARE WORKING TOWARDS ACHIEVING  
WITH THEM TO HELP END YOUTH HOMELESSNESS."**

Noah Warren, Head of Quintessential Assets

## CORPORATE PARTNERS

At Lighthouse, our partners make our important work possible and provide financial and pro bono support that ensures we can do what we do to support our young people every day.

alfasi property

GLENVILL  
DEVELOPMENTS

MCCORMACK

mim

NATIO

PROVINCIAL  
HOME LIVING

Q QUINTESSENTIAL

RedZed



teba

T.house

Alfasi Property  
Armitage Jones  
5G Networks  
Accent Group  
ANZ  
Australian Private Capital  
Australian Unity  
ADP Employer Services  
Betty's Burgers  
Brand Laundry  
Collins Square  
DB Results  
Department of Families  
Fairness & Housing  
Enlightened Financial Solutions  
Ernst and Young

Feel Good Ink  
GJK Facility Services  
Glenvill Developments  
GlobeWest  
Greenslist Barristers  
Hansen Yuncken  
HOW Group  
Homie  
720 Bourke  
Justice Services  
Kalus Kenny InteleX  
King & Wood Mallesons  
Kip & Co  
Mc Cormack  
ME Services  
Melba Brokers

Melbourne City Council  
MICM  
Minter Ellison  
MIRVAC  
Monash University  
MYOB  
Natio  
Natural Selection Group  
Officeworks  
Origin Energy  
Pitcher Partners  
Procal Dairies  
Provincial  
PWC Services Trust  
Qualitas  
Quintessential

MBM  
REA Group  
Redzed  
Suncorp Group  
Slack  
StraightUp  
StockX  
Swimwear Galore  
Studio Hawk  
Teba  
T.House  
Vitality Brands Worldwide  
Verve Events International  
Walker Assets Services  
Westpac Banking Corporation  
Zagame Automotive Group



Future  
Generation  
Australia  
INVESTMENT & SOCIAL RETURNS

Thank you, Future Generation Investment Company (FGX) for being a major benefactor to Australian children and youth at risk. We really appreciate your ongoing support that ensures Lighthouse's sustainability and future for many years to come.



RedZed  
Loans for the self-employed

Our long-standing partner, RedZed have always gone above and beyond to support Lighthouse Foundation in many ways. We are forever grateful to have RedZed supporting our programs.



# THANKS FOR THE GENEROUS SUPPORT OF OUR MEDIA PARTNERS

At Lighthouse, our media partners make our important work possible by providing financial and pro-bono support to help raise awareness of youth homelessness.



# THANKS TO OUR COMMUNITY PARTNERS AND IN-KIND SUPPORT

Thanks to those who have donated funds or gifts in kind, or held a fundraiser, or supported us in delivering Community Fundraising events:

- |                              |   |                                    |                                 |
|------------------------------|---|------------------------------------|---------------------------------|
| Akira Grateful               | Foundation Learning Centre                      | Norsu Interiors                    | Tasman Chemicals                |
| All Aboard Club Williamstown | Grill'd   | PGA of Australia                   | The Enlightened Project         |
| BIG Childcare                | Hawthorn Tennis Club                            | Prahran Football Club              | Tour de Trails (Afterglow)      |
| Brand Laundry                | IOOF Alliances/                                 | RIO Tinto Services Ltd             | Up Property (Run Melbourne)     |
| Bunnings                     | Insignia Financial Ltd                          | Melbourne Golf Club                | Waverley Basketball Association |
| Captured By Amanda           | Kylie Southwood Photography                     | Royal Brighton Yacht Club          | WomenCAN                        |
| Cannings Butchers            | John Rombotis & O'Brien Real Estate Keysborough | Royal South Yarra Lawn Tennis Club | Yarra Trams                     |
| Denu                         | Mattel  | Simon Neale (Mont Blanc Challenge) |                                 |
| Evolve Early Education       |   |                                    |                                 |

# PARTNER SCHOOLS

- |                                |                               |                   |
|--------------------------------|-------------------------------|-------------------|
| Bassar College                 | Lowther Hall Anglican Grammar | Scotch College    |
| Chelsea Heights Primary School | Lilydale High School          | St Kevins College |
| Caulfield Grammar School       | McKinnon High School          | Wesley College    |
| Kilvington Grammar             | Methodist Ladies College Vic  |                   |



Lighthouse Foundation received an in kind gift of \$65k of computers from our corporate partner Compnow in the last financial year.





WITH THE SUPPORT OF OUR COMMUNITY OF ADVOCATES, WE GET CLOSER TO ACHIEVING OUR MISSION TO END YOUTH HOMELESSNESS, TOGETHER.

OUR BOARD



LEN WARSON  
Chairman



SUSAN BARTON AM  
Founder & Director



BRIDGET CROWE



WILLIAM (BILL)  
MOUNTFORD



SYLWIA PICHEL



ANNE JEFFS  
Resigned 04.04.2023



DEAN FIRTH



AMIT HOLCKNER



LORALLE SLATER

LIFE MEMBERS



SUSAN BARTON AM



VICKI VIDOR OAM



PETER EDWARDS



DAVID LEETON



RICHARD LLOYD

PATRONS



ANTHONY HOWARD  
AM QC  
Patron in Chief



VICKI VIDOR OAM  
Founding Patron & Patron  
of the Young Parents Program



PETER EDWARDS



VICKI STANDISH AM



ALICIA LOXLEY



BEVERLEY BROCK AM



DEBORRA-LEE  
FURNESS AM



JO STANLEY



JANE BADLER-HAINS



MICHAEL CRAWFORD  
CBE



PROFESSOR BRIAN  
BURDEKIN AO



SIR CLIVE LLOYD  
CBE AO

AMBASSADORS



TOMMY LITTLE



MICK MOLLOY



HAVANA BROWN



KARA & KYAL  
DEMMRICH



STEVIE NICHOLSON



SHARNI LAYTON



# LIGHTHOUSE FOUNDATION RELIES ON THE SUPPORT OF THE *community* TO DO THE WORK WE DO EVERY DAY



Our Lighthouse Keepers are a very special group of supporters who donate to Lighthouse every month and keep the 'lights burning brightly' in our homes. This year, their gift has been especially crucial as we have expanded our services 100% in keeping our homes open, food on the table, providing regular counselling and vital, consistent support from carers. Thank you to all our Lighthouse Keepers whose generosity ensures that we can be there for vulnerable young people for many years to come.

## BECOME A LIGHTHOUSE KEEPER TODAY

Join our inner circle of VIP monthly donors, our Lighthouse Keepers, please visit [lighthousefoundation.org.au/donate](https://lighthousefoundation.org.au/donate)



## LEAVE A LASTING LEGACY

A Gift in your Will is a gift to every future young person impacted by abuse, neglect and homelessness. Leaving a gift in your Will is a particularly personal way to make a lasting difference to the children and young people in our care. After providing for those you love, we would like you to consider remembering Lighthouse so that we can continue to support the young people who need us the most.

Your gift, however large or small, will last forever as it not only immediately impacts the quality of young people's lives, but also those for generations to come.

**For more information about leaving a Gift in your Will, please contact our Head of Philanthropy and Bequests, Michelle Michie on (03) 9093 7500 or email [michellem@lighthousefoundation.org.au](mailto:michellem@lighthousefoundation.org.au)**



**TOGETHER,**  
*we create*  
*pathways*  
**TO ENSURE**  
**THOSE WITH**  
**EXPERIENCE OF**  
**HOMELESSNESS**  
**OR TRAUMA**  
**DON'T BECOME**  
**DEFINED BY IT**



[lighthousefoundation.org.au](http://lighthousefoundation.org.au)  
[reception@lighthousefoundation.org.au](mailto:reception@lighthousefoundation.org.au)  
03 9093 7500

ABN 12 101 54 95 08

