



**Lighthouse  
Foundation**

A place where  
homeless kids belong

# IMPACT REPORT

**2017-2019**



Hallie 12, lived in 16 different homes  
before coming in to Lighthouse's care.



# WE'VE GOT NEWS FOR YOU

## Contents

- 2 A bit about us
- 3 Chairman's message
- 5 The impact of your support 2017-2019
- 6 Who we're here for
- 7 Financial snapshot
- 8 Leaving a Legacy
- 10 Our programs
- 12 CEO and Founder's message
- 13 Our Patrons and Ambassadors
- 14 Two years of big impact
- 17 Community of support



Over the past two years we've widened our impact by changing the lives of more vulnerable young people, children and babies.

We have expanded and launched new programs which we hope will inspire you and provide insight in to our work and the genuine care we provide.





# A BIT ABOUT US

Lighthouse Foundation supports and cares for some of Australia's most vulnerable young people, children and babies who typically come from backgrounds of long-term neglect and abuse.

The young people in our care include young adults, teens, children, young parents, babies and girls fleeing forced marriages.

Lighthouse provides these young people with a home, a sense of family and around-the-clock therapeutic care that is trauma informed with demonstrated long-term outcomes.

70-80% never experience homelessness again.

Over the past 29 years, Lighthouse has successfully supported more than 1,000 young people to break the cycle of homelessness, move in to employment and educational opportunities and overcome damaging life experiences.

## Our vision

A safe home and community for homeless kids to belong, heal and thrive.

## Our mission

We provide therapeutic homes and create a caring community for homeless kids and foster families. Through the Lighthouse Model of Care our kids receive the level of support required to achieve a lifelong sense of belonging, the opportunity to heal and the capacity to thrive.

## Our values

We are respectful  
We are kind  
We are courageous  
We are thoughtful  
We are committed.





# CHAIRMAN'S MESSAGE



Over the past two years, our program of therapeutic residential care has continued to deliver outstanding outcomes for the children and young people in our Lighthouse homes. It has also been a period of expansion when we have had the chance to apply our evidence-based Model of Therapeutic Care to assist several new groups of children and young people with specific needs.

We have also begun early intervention programs aimed at bolstering care relationships to prevent vulnerable young children from later entering into homelessness.

The Lighthouse team's ability to provide an exceptionally high level of support for deeply traumatised small children has seen referrals of some of Australia's most vulnerable children within the Child Protection system. Research tells us these children, without intervention, are likely to experience homelessness before the age of 25 and/or end up in the youth justice system. The highly regarded Lighthouse carers have been devoted in their care of these children and they are doing inspiring work, helping them overcome the impacts of their trauma and supporting them to find new ways to work with life's challenges. The Lighthouse Model enables ongoing support to be provided to these children as they move towards permanency of foster family or kinship care.

Our high level of private funding enables the unique structure of the Lighthouse community to support innovative pilot programs. These include the program for girls escaping early and forced marriages called the 'Young Women's Freedom Program', and the impending commencement of the Lighthouse Hub Home Foster Care pilot.

The social impact of these programs is expected to be significant. The highly regarded Young Parents' Program is now in its 10th year, and we have gathered rare insight into ways to address cross-generational issues of homelessness and building healthy attachment bonds between mothers and their newborns.

We have celebrated many highlights, only some of which are featured in this Impact Report. As we approach our 30th year, we are excited by the development of another two new Lighthouse homes by the Property Industry Foundation – including a rebuild at Clayton, and we are immensely grateful for their support.

I wish to acknowledge the efforts of the Lighthouse Board members in the past period, and to thank them for their enduring commitment to work towards finding innovative, scalable and effective responses to the issue of youth homelessness. Thank you also to CEO, Simon Benjamin for his steady leadership of the team, and last but not least, to Susan Barton AM for her relentless advocacy for every child to have a safe and loving home.

Faithfully

A handwritten signature in black ink, appearing to read 'Peter Edwards'. The signature is stylized with a long, sweeping horizontal stroke at the end.

**Peter Edwards**  
Lighthouse Foundation, Chairman





## Savannah and Paige

“ Lighthouse helped me begin my hairdressing apprenticeship and my Carers have even been letting me style and practice on their hair. I never thought I’d be good at anything but I’m hopeful now. ”

Savannah

Our Lighthouse programs help young people like Savannah and Paige by giving them the opportunity to heal and change the trajectory of their lives. Over the past two years, our care has grown to help many more kids across Australia from all walks of life. Our aim is to provide these children with not just a home, but the genuine therapeutic care they deserve.





**950+**

young people part of our 'On For Life' outreach program.



**91**

young people in our live-in care program.



**96%**

of young people in our care were engaged in day programs including education, employment and training.



## Youth Resource Centre

We provide support to every current and outreach young person through our centrally-located Youth Resource Centre.



**28,000+**

nappies changed for our babies and toddlers.



**920+**

volunteers supported Lighthouse generously giving their time, skills and energy to help our vulnerable young people.

**EY**

According to a survey done by Ernst and Young in 2018, our programs help to provide a long term solution for youth homelessness while creating significant public saving to state.

**24/7**

support for our young people 365 days this year, uniquely and On For Life.

**5,000+**

psychological sessions occurred helping kids unpack trauma and begin to heal.

**\$2.1+ million**

Over the past two years, our major fundraising campaign 4UpDay raised a record \$2.1million.

# THE IMPACT OF YOUR SUPPORT 2017-2018



# WHO WE'VE CARED FOR

## 2017-2019



**5%**

were refugees



**34%**

had a disability



**27%**

identified as LGBTQ+



**41%**

were Aboriginal/  
Torres Strait Islander

### Ages we cared for Newborns- 25 years



### How our young people identify



- 59% Females
- 38% Males
- 3% Non-binary

# FINANCIAL SNAPSHOT

Lighthouse has a history of privately funding life changing care for nearly 1000 kids who were either homeless or at risk of homelessness. Your funding over the past two years has had a direct impact on the lives of each and every young person in our care.

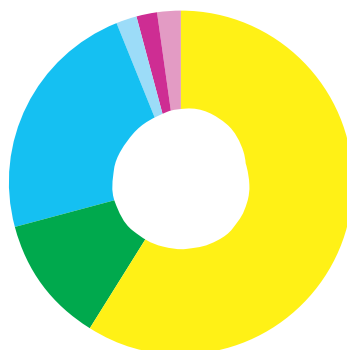
Social Ventures Australia (SVA) assessed that every \$1 invested in our Lighthouse programs delivers a massive \$12 worth of social and economic value in return. This is still the largest return of investment SVA has ever recorded, even after completing assessments of over 130 charity programs.

Proudly annually audited by

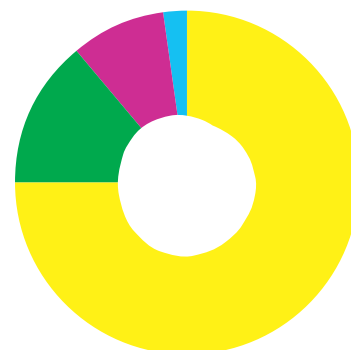


## 2017-2018

Where our \$ come from

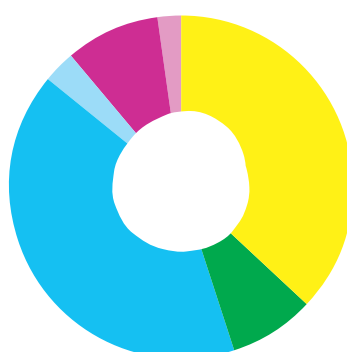


Where your \$ goes

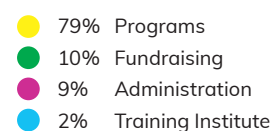
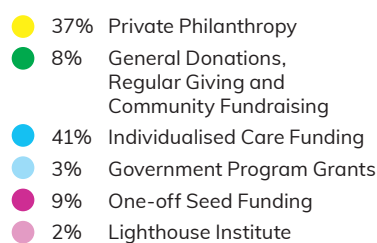
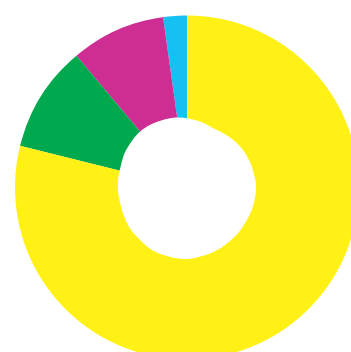


## 2018-2019

Where our \$ come from



Where your \$ goes







## LEAVING A LEGACY TO CHANGE CHILDREN'S LIVES

The following legacy gifts have helped change the lives of some of Australia's most vulnerable kids. Your gift is forever lasting, impacting not just the quality of their lives but those of generations to come.

### LEGACY GIFTS 2017-2019

Estate of the late Ilona Barbara Papajacsik

Estate of the late Victor Paul Anderson

Estate of the late John Brunner





# HOME IS WHERE THE HEART IS

## OUR PROGRAMS

Each of our programs are individually tailored to respond to the specific needs of various young people, children and babies. Our mission is to provide a safe and loving home for these kids where they can heal and begin to overcome their traumatic early life experiences. Over the past two years, we have introduced a number of new programs including our Young Women's Freedom program home, Toddlers & Children program and the beginnings of our ground-breaking Foster Care pilot program.

As sad and challenging as these children's stories are, it is an affirmation to the ability and thoughtfulness of our highly-skilled care team that our model does apply across a multitude of different ages and demographics. We hope that our programs inspire you and provide insight in to trauma-informed therapeutic care and the life-changing impact of our work.



# OUR PROGRAMS

## YOUNG PARENTS AND BABIES

The Vicki Vidor OAM young parents and babies program yields positive, life-changing results for two generations at once. It has been carefully designed to heal the trauma and chronic homelessness of very young parents, teach essential parenting skills and prevent trauma for their babies at their most vulnerable stages of life. These homes provide a safe haven in which young parents are supported to learn about their own needs and child's needs with our live-in carers acting as positive role-models and support systems during an influential time of life.



## TEENAGERS AND YOUNG PEOPLE

Our adolescent core program supports young people aged between 15 and 22 when they first arrive. Many of the young people in these homes have experienced significant neglect, trauma, abuse and homelessness. Our live-in carers provide them with the essential support they need to move from the darkness of their past and into a brighter future. Each young person transitions to independent living when they are ready, sometimes sharing private accommodation with peers that they have met at Lighthouse.



## ON FOR LIFE PROGRAM

Every young person who transitions out of a Lighthouse home into independent living has access to a lifetime of practical and long-term relational support whenever they need it. They may come back to live with us for a while, seek help when applying for jobs and preparing for interviews, or require psychological counselling during a difficult period in their lives. This program is delivered by our Care and Psychological Wellness Team with over 950+ kids able to access support whenever they need.



## YOUNG WOMEN'S FREEDOM PROGRAM

A challenging new program has commenced in one of our Lighthouse homes to support young women escaping early and forced marriages. With referrals from a range of sources including the Australian Federal Police, we provide a safe home and 24/7 care to these girls who are often escaping violent domestic situations. Our program is designed to help these young women overcome their traumatic life experiences, build relationships and heal in a safe and secure environment. Since this program was the first of its kind in Australia, we were able to receive a once-off seed funding from the government to research and launch the home. However, from now onwards we will require private funding in order to continue the program and care for these girls.



## TODDLERS AND CHILDREN

Lighthouse's Toddlers and Children early intervention program cares for little ones under the age of 15 who have highly complex needs. These children aren't able to live with their biological parents and have often experienced multiple breakdowns in their foster care placements. Our care team provides a high level of support for each of these children, primarily focusing on the need for early intervention. Without our help, many of these children would likely experience homelessness before the age of 25.

## FOSTER CARE

After considerable research, literature reviews and strategic planning, Lighthouse has commenced a pilot program which applies our proven model of care to the Foster Care sector. Our experience over the past 18 months caring for children with high needs who have been unable to settle in the foster care system shows that there is a lack of adequate support available to foster carers. Over the next twelve months, we aim to launch a central Hub Home (with 24/7 support) that acts as a second home for these families. Foster parents and children in our program will be able to visit the hub frequently for respite, support, community activities and counselling. We believe this will take the pressure off foster families, provide a rich experience for the foster children and help maintain the stability of the children's placements.





# CEO AND FOUNDER'S MESSAGE



Dear friends,

We are proud to bring you this report on the positive social impact of our programs over the past two years. It has been a period of exceptional expansion of our programs as we have explored innovative ways to apply our proven Model of Therapeutic Care to various different groups of children and young people, as well as the vulnerable teenagers we have always cared for in our suburban Lighthouse homes.

Later this year we are celebrating the entry of our 1000th young person into our program. Because our program entails a (usually) long stay in one of our family-style homes, and is followed by ongoing support ("On For Life"), this number represents a significant body of work in healing and trauma recovery. From the smallest beginnings in a single home, to now having a network of homes with our Youth Resource Centre as our hub, our mission to ensure every child has a safe and caring home has reached a significant milestone.

A feature of this past period has been the approach from government to assist in the care of young children who have experienced frequent placement breakdown in the foster care system, and to open a home specifically for the additional cultural needs of a particular group of victimized young women and girls. This has enabled Lighthouse to showcase our evidence-based Model of Care when applied with different groups of vulnerable children and young people, adding to the already significant body of research being gathered through ten years of operating our highly regarded Young Parent & Baby program.

The stage is now set for Lighthouse to extend our reach in developing a new model of highly supported foster care, and to gather the evidence that is required to offer this pilot model out across the sector in future years. This is only possible due to a strong partnership between government, private philanthropy, and our supportive Lighthouse community. Crucial to this, is our inner circle of committed volunteers, and our Community Committee members. These people are the most trusted members of our wider circle of support, and we are deeply grateful for their loyalty.

We both would like to thank each one of our staff team, our volunteers, and our ever-widening circle of past residents who have gone on to become supporters who make their own contribution to our mission to end youth homelessness together. Most importantly, we acknowledge the children and young people of Lighthouse who inspire us daily with their courage, determination to overcome all setbacks, and wonderful spirit. You deserve our protection, care and love.

With heart

**Susan Barton AM**  
Lighthouse Foundation  
Founder

**Simon Benjamin**  
Lighthouse Foundation  
CEO

# OUR PATRONS AND AMBASSADORS

## Patrons



Patron In Chief  
Anthony Howard AM QC



Founding Patron and Patron  
of the Young Parents Program  
Vicki Vidor OAM



Alicia Loxley



Beverley Brock OAM



Deborra-Lee Furness AM



Jo Stanley



Jane Badler-Hains



Michael Crawford CBE



Professor Brian Burdekin AO



Sir Clive Lloyd CBE AO



Tim Watson



Vicki Standish AM

## Ambassadors



Havana Brown



Kara and Kyal Demmrich



Mick Molloy



Sharni Layton



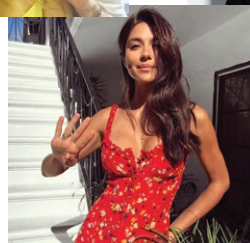
Stevie Nicholson



Tommy Little



# TWO YEARS OF BIG IMPACT



We would like to take a moment to reflect on some of the fundraising highlights and events that have taken place over the past two years.

These special moments have significantly assisted in funding our life-changing programs and created lasting memories for our Lighthouse community.

## THANK YOU

### 4Up Day

Woohoo! Our most successful fundraiser 4UpDay continues to grow each year raising record million dollar numbers. These special days were made possible thanks to generous matchers and partners who from the very beginning promised to match every single donation x4 so that we could not only reach, but exceed our goals.

2017-2019

**\$2.1 MILLION**

2018

**\$917k**  
RAISED IN 24HRS

2019

**\$1.27 MILLION**  
RAISED IN 24HRS



### #Stickittohomelessness

As a part of National Homelessness Week 2017, Lighthouse partnered with over 50 major restaurants and cafes to distribute 44,000 custom made stickers representing the number of kids homeless in Australia on any given night. These stickers were distributed on everyday items such as mobile phones and coffee cups to spark conversations among friends, families and colleagues about the issue of youth homelessness and encourage the community to take action alongside Lighthouse.



### NAIDOC Week

Every year we celebrate NAIDOC Week by participating in the public march to commemorate the history, culture and achievements of the Aboriginal and Torres Strait Islander peoples. In 2019, our young people spent the morning helping us to create a beautiful and colorful banner which we carried proudly with us on the day.



### Young People's Art Exhibition

In celebration of our Art therapy program, our young people, staff and extended community created diverse and colorful artworks for our much loved annual Art Show. The works were publicly displayed in a pop-up gallery at Schoolhouse Studios in Collingwood, with all proceeds from art sales going back to the young person artist.

# COMMUNITY COMMITTEE EVENTS

Every year, our community committees gather together to support our homes and vulnerable young people. They dedicate their time and energy to host movie nights, Bunnings sausage sizzles, tin shakes and other special events in their spare time to help our cause. Last year, their Light on the Green cocktail function alone raised over \$60,000 for our Lighthouse homes, while celebrating the hard work and commitment of these long-standing volunteers.



# PRIVATE FUNDRAISERS



## Kids in Philanthropy- Hangout for the Homeless

This annual fundraising event run by KiP has been an incredible success over the past two years. Families around Melbourne participated in workshops and sleep-outs to help fundraise towards our 4UpDay campaign raising over \$100,000 in matched funds since 2017.

## Share Your Heart Mother's day lunch

Long-term supporter and Lighthouse Patron, Jane Hains hosted a memorable Mother's Day lunch at Quat Quatta which raised significant funds for our young parents program. It was a heartfelt day that we will remember for years to come with entertainment from the talented Ruby Vidor and inspiring speeches from Sigrid Thornton, Joanna Murray Smith and one of our young mums.

# AWARDS



## Young People's George Awards

Lighthouse's annual George Awards is a very special evening held by long-term supporter Dessie Kontis. In honor of her late father George, we acknowledge the achievements and milestones of the young people awarding scholarships in the areas of education, community engagement and other progress. Dessie is pictured here next to Susan and Simon.



## Fundraising Institute of Australia (FIA) Awards 2018

Our Marketing and Fundraising team was awarded 'National Fundraising Team of the Year 2018' by the FIA. They also received the 'National Award for Excellence' in the category of Fundraising Donor Renewal Under \$5Million in Revenue and 'Most Innovative Program' for their 4UpDay campaign.



## Governor's Volunteer Recognition Award 2018

Four of our most dedicated and highly-skilled volunteers who support Lighthouse were invited to Government house to be recognized for their outstanding volunteer contribution. Our Patron in Chief Judge Anthony Howard awarded Catherine Green, Graham Robertson, Joe Demase and Ralph Todisco this special honor that will be remembered for many years to come.



# CORPORATE EVENTS



## RedZed Lending Solutions

Our wonderful partners over at RedZed certainly know how to hold an event! Over the past two years they have held countless fundraisers including their Christmas Reindeer Run and 4UpDay breakfast raising over \$100,000 for Lighthouse. We are so thankful for their involvement and for supporting our cause with such energy and enthusiasm.



## Madgwicks Lawyers2018

As Madgwicks' Charity of the Year, we were honored to participate in a rolling calendar of events including their luncheon and footy finals that made a significant contribution of over \$30,000 to Lighthouse. We can't thank their team enough for their kindness and generosity which helped us to care for more vulnerable young people, children and babies.

## General Pants Twice as Nice

Australian fashion retailer General Pants Co. raised over \$150,000 for Lighthouse through our national 'Twice as Nice' campaign. The retailer pledged to donate an additional \$2 for every \$1 given by customers over the Christmas period celebrating the true gift of giving.



## Annual Wishing Trees

In 2018, Lighthouse partnered with 28 corporates including Oscar Hunt Tailors for our Wishing Tree gift drive to help us fulfill the festive wishes of our young people and Carers. This unique program began in 2013 with just a handful of committed corporates. It now has grown to support not only the gifts for our current and outreach young people, but also helps Lighthouse to equip the homes and Youth Resource Centre with festive supplies and essential items throughout the year.

## Property Industry Foundation (PIF) Ball 2018

One of our amazing young people, Jesh, had the opportunity to speak at PIF's annual Gala Ball proudly supporting their charitable program, which has built two Lighthouse family homes supporting dozens of young people. Jesh inspired the audience and represented Lighthouse so beautifully while thanking PIF for their significant contribution.



# COMMUNITY OF SUPPORT

Lighthouse Foundation is deeply appreciative of our trusts & foundations, partners, supporters, volunteers, individuals and long-standing donors who have insight into the vital importance of addressing the trauma of these vulnerable young people. We could not continue the ground-breaking work we do with our kids without their commitment and support.

## Partners

5G Networks  
ANZ  
Australian Maritime Safety Authority  
Australian Toy Association  
Cabrini Health  
Camberwell Grammar  
Carsales  
CNP Brands  
CompNow  
Cotton On  
DBXB ANZ Pty Ltd  
Department of Health and Human Services  
Epworth Health  
Federal Department of Social Services  
Foodbank Australia  
General Pants Co  
Glenwill Pty Ltd

GoPromote  
Grand Hyatt  
Glenslist Barristers  
Grocon  
Homie  
Kalus Kenny Intalex  
LinkedIn  
Magellan Group  
Minter Ellison  
Mirvac  
NBN Network  
News Corp Australia  
Ngage Technologies  
Nine Entertainment Co  
OZ Harvest  
Pitcher Partners  
Property Industry Foundation  
QMS Media Limited  
REA Group  
RedZed Lending Solutions  
Scotch College  
Second Bite  
Silent Partner HR Consulting  
Swimwear Galore  
Tasman Chemicals  
TEBA  
Telstra  
TLA Worldwide (Aust) Pty Ltd  
The City of Melbourne  
Victor Smorgon Group  
Vittori Communications





# CREATIVE & MEDIA PARTNERS



## BWM Dentsu

This creative agency helped Lighthouse to create a powerful video for Youth Homelessness Matters Day which shared our message with over 1.5K people.



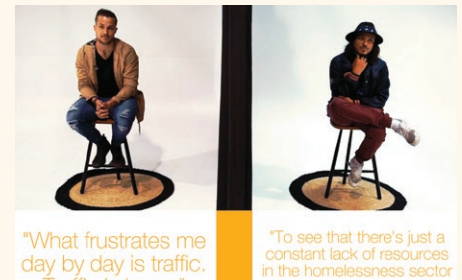
## Pancho Studio and Sketch Group

Earlier this year, Lighthouse was lucky enough to gain the support of Animation studios, Pancho and Sketch Group. With the help of their incredibly talented animators, we were able to launch three unique Lighthouse videos which help to tell our journey and some of our children's stories in a unique and engaging way.

# FOR

## FOR Studio

Award-winning brand and design agency FOR studio play a crucial role at Lighthouse in helping us develop our creative campaigns, reports and marketing collateral. We are deeply grateful for their strategic and innovative input and continued support over the past three years.



## Operation Mobilise 'Curtain Between Society'

For Youth Homelessness Week 2018, Lighthouse created an emotive film titled 'Curtain Between Society' with the help of student videographers from Operation Mobilise. This film featured everyday Australians and people from the Lighthouse community to get society to think about the issues and causes of youth homelessness, demonstrating we are all the same.



## REA Group

Our wonderful partners over at REA Group have been an incredible support to Lighthouse, offering our fundraising team creative guidance and pro bono advertising. With Realestate.com.au having monthly audience of over 5.9million people across the country, their support was a game-changer for our 4UpDay campaign. We are so thankful for this thriving relationship and look forward to working together on more exciting new projects.



## QMS Media and TLA Worldwide

Over the past two years, Lighthouse has received a substantial amount of pro bono support from QMS Media and their creative team. Donating over \$200,000 of digital billboard space for 4UpDay 2017-2019 meant that our campaigns were able to reach far and wide resulting in \$2.1Million in donations. Their wonderful sister company TLA Worldwide, one of the world's leading athlete and personality talent groups has also helped to connect us with their large client base including our latest Ambassador, Sharni Layton.

# TRUSTS, FOUNDATIONS AND MAJOR GIFTS

ACME Foundation	Holy Trinity Opportunity Shop	Rochoff Family Trust
All Souls Opportunity Shop	Inner North Community Foundation	Rotary Club of Melbourne
Allen's Foundation	Interact Club of Doncaster	Rotary Club of Templestowe
Ann Dunn	Secondary College	Senza Nome Charitable Fund
Annette Lowe	Interact Club of Immanuel Lutheran	Shine on Foundation
Ansvar Insurance	College	Sow Foundation
ANZ Staff Foundation	James Williams	Spotlight Charitable Foundation
Australian Communities Foundation	Kamener Family Trust	Stephen and Jane Hains
Australian Philanthropic Services	Keith Noack	Summit Roof Plumbing
Arnold Wittner	Kel & Rosie Day Foundation	The Bruce Parcutt Family
Bagot Gjergja Foundation	Kids in Philanthropy	Foundation
Bardas Foundation	Leonie Van Raay	The Dion & Sandra Abrahams
Betty Radford	Lions Club of Reservoir	Endowment
Brett and Barbora Williams	Lord Mayor's Charitable Fund	The Flora and Frank Leith Charitable
Campbell Edwards Trust	Matthew Dalling	Trust
Carl Maissan	Melbourne Magistrates'	The Isobella Foundation
Charles Tegner	Court of Victoria	The Jack Brockhoff Foundation Ltd
Charter Falls Pty Ltd	Merwe Laws Foundation Ltd	The Jack & Ethel Goldin Foundation
City of Kingston	Moelis Australia Foundation	The Joseph Brown Sub Fund
Coca-Cola Australia Foundation	Mona Georgina Harris Perpetual	The Justin Foundation Trust
Commonwealth Bank Australia	Charitable Trust	The King David School
Contemporary Video Vision	Moreland City Council	The Orloff Family Charitable Trust
Craig Keyzer	Mutual Trust Foundation	The Piers K Fowler Trust
Dandenong Magistrates' Court of	MRC Foundation Trust	The Pratt Foundation
Victoria	Nbnco	The Tauber-Troeth Foundation
David and Leonie Koadlow	Nordia Foundation	The William Angliss (Victoria)
Dessie Kontis	Parncutt Family Foundation	Charitable Fund
DS Capital Endowment	PayPal Giving Fund	Thompson Jenkins Endowment
Eva Gurman	Pearce Armstrong Foundation	Transurban
Evan Dwyer	Portland House	VBS Investments
Future Generation Investment	Quintessential Trust	Vicki Standish Family Foundation
Company	Ralph Todisco	Vicki Vidor OAM
Gandel Foundation	Randall Foundation	Victor Smorgon Charitable Fund
Genworth	Ray & Margaret Wilson Foundation	Victorian Women's Benevolent Trust
Golden Nugget Hotel	Reid Malley Foundation	Wanless Family Fund
Graeme Ellen and Janine Ferguson	Restore Hope Foundation	Ward-Ambler Foundation
Harry Potter Alliance Perth	Rich Hart Foundation	Women in Super
Herbalife Nutrition	Rick McKenna Entertainment	Yeast Foundation

## Future Generation Investment Company (FGX)

We would like to take a moment to thank our wonderful friends over at FGX for their continued support of Lighthouse Foundation. FGX is growing its contributions to homeless young people year by year and is an outstanding example of corporate social responsibility from the investment community. This funding allows us to continue our ground-breaking work and help more young people heal and thrive.



**Geoff Wilson AO** **Louise Walsh**  
FGX Founder FGX, CEO

**Future  
Generation**  
INVESTMENT & SOCIAL RETURNS



# IN KIND PARTNERS

Be Challenged  
Bunnings  
Cabrini Health  
CompNow  
Deliveroo  
Epworth Hospital  
Food Bank  
General Pants Co  
Grill'd  
Melbourne United Basketball  
Nandos  
OzHarvest  
Procal Dairies  
Second Bite



## Meet Ben, our brilliant CompNow IT Resource

For the past twelve months, we've been blessed to have a pro bono resource from CompNow supporting all our IT needs. CompNow has been a significant contributor to Lighthouse in many ways and we are so thankful to have Ben a part of our team.

# VOLUNTEERS

Our volunteer Community Committees are a special and unique aspect of our model of care. Volunteers from all around Victoria fundraise, give hands-on support and act as positive role models for our young people to help them heal and thrive.

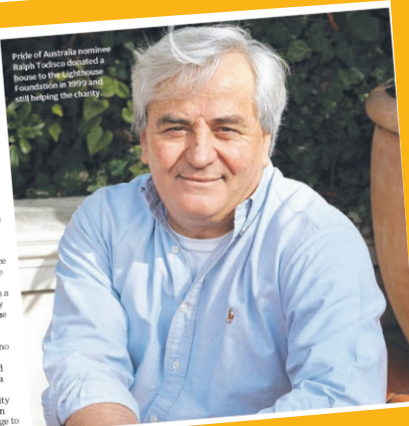
## 'Hero' Ralph shines light

Home donor marks 20 years

Twenty years ago Ralph Todisco generously donated his home to the Lighthouse Foundation – and he's been helping them out ever since. "Having provided for my children, I became increasingly aware of the many other young people who were not as fortunate," the Italian grandfather said. "I desperately wanted to do something about this injustice."

In 1998, he met Lighthouse's founder Susan Barron and donated his Keysborough home, which became one of the charity's first residential care homes. Mr Todisco last week celebrated 20 years as a volunteer with the charity.

He said Lighthouse gave homeless kids a chance to change their lives. "To be in a safe environment and to enjoy simply being a child," Mr Todisco described Mr Todisco as "an absolute force of nature" in fighting for the needs of homeless kids. "For 20 years he has been a lynch pin of the community committee that supports the Lighthouse home in Springvale," she said. "To the young people who have graduated from that home base, and completed their education, Ralph is a hero and still a friend. "Ralph is the community organiser that has proven the adage 'it takes a village to raise a child.'"



Pride of Australia nominee Ralph Todisco donated a home to the Lighthouse Foundation in 1998 and still helping the charity.







# Let's believe that we can make a difference in the world, so that we can do what others claim cannot be done.

To fundraise, volunteer or get involved please call (03) 9093 7500 or visit [Lighthousefoundation.org.au](http://Lighthousefoundation.org.au)



Hallie now lives in one of our Lighthouse homes where she feels safe, secure and can finally begin to heal with the support of her Carers and Psychologists.



**Lighthouse  
Foundation**

A place where  
homeless kids belong



ORGANISATIONAL  
MEMBER  
CODE COMPLIANT



Quality  
Innovation  
Performance