



This photo is for illustrative purposes only.

Breaking the cycle of homelessness early

Months ago, Jenna* remembers herself as a regular teenager, attending school, doing sports and meeting up with friends. But in a series of events, Jenna found out she was pregnant and knew her life was going to change in an enormous way. Having a child at 16 is not an easy task, and despite support from her mother, she was still heavily burdened by a great deal of stress and realised she needed something more.

She then joined Lighthouse's Vicki Vidor home for Mothers and Babies and since living at Lighthouse, her experience has been "phenomenal and life changing". Jenna is now a proud mother of a happy and beautiful baby daughter. She has been described by her carer Barbara as a diligent, delightful, loving mother, and an incredible role model for the new mums coming into the home.

'Lighthouse has changed my life. I don't know where I would be, what my relationship with my daughter would be like ... and I could not be happier.'

Jenna now aims to continue to develop her relationship with her baby daughter and family as well as complete her VCE. Jenna plans to further her studies and become an intensive care paramedic, and she will have Lighthouse's support behind her every step of the way.

*Name has been changed to protect this mother's privacy.

A message from the CEO

We are delighted to bring you this year's second Lighthouse Foundation newsletter.

Over the past few months, Lighthouse has been hard at work preparing to share the Lighthouse Therapeutic Family Model of Care and I am pleased to say that Lighthouse is well positioned to begin rolling out our Model of Care by next year.

Lighthouse has also been busy with the establishment of our tenth Lighthouse Home, the Sandra Bardas City Lighthouse. We are excited that this home will now begin making a difference in the lives of more homeless young people. In addition, our Vicki Vidor Home for the Young Mothers and Babies program has been amazing at impacting the lives of the young mothers and children.

Successfully delivering our programs would not be possible without the support of our corporate and philanthropic partners, individual members of the community and other community organisations; such as Cabrini, Fenton Stephens and Complete Office Supplies to name a few.

The true champions of Lighthouse will always be our Carers – living in our Lighthouse homes and acting as therapeutic parents to our young people, their outstanding care and dedication continues to make the difference in the lives of the young people we care for.

Looking ahead, the next few months will be packed full of awesome Lighthouse events – many featured in this newsletter. With some events just a few weeks away, contact Lighthouse to get your tickets or bookings. And of course we welcome any donations you would like to contribute, be that of a general kind or to support a particular event. Hopefully I will see you at one of our events soon.

Once again, thank you all for your support of Lighthouse as together we help break the cycle of youth homelessness.



Kane Bowden, CEO

To follow Kane on twitter, go to www.twitter.com/kanebowden



Give charity without paying a cent!

In an effort to cut costs and reduce our environmental footprint, Lighthouse is looking to issue an e-newsletter. To receive this newsletter via email simply email office@lighthousefoundation.org.au with the subject line 'e-newsletter'.

13 Adolph St, Richmond VIC 3121 P. 03 9093 7500 F. 03 9093 7555
ABN 12 101 549 508 office@lighthousefoundation.org.au

www.lighthousefoundation.org.au



people who care

Businesses making a difference

Lighthouse is the organisation it is today thanks to the wonderful support of a range of businesses.

The Property Industry

Foundation (PIF) chose Lighthouse Foundation as the sole beneficiary of money raised from its recent Charity Sailing Challenge.

PIF, formed in 1996 by leaders in the property industry, aims to mobilise its resources to assist charitable organisations that provide services to youth at-risk. It has since grown, and is now the leading charitable organisation in the property industry.

PIF's sailing challenge not only supported Lighthouse financially, but also helped place a big smile on the faces of Lighthouse young people and staff by allowing them to enjoy the wonderful experience of riding on the yachts.

Lighthouse recently formed a new partnership with **Charter Hall**, one of Australia's leading fully integrated property groups, committed to supporting local initiatives and giving back to the communities in which they operate. Through Charter Hall's residential development of the Lacrosse Apartments in Docklands, the 'Lacrosse Initiative' aims to raise significant funds for Lighthouse Foundation.

Lighthouse Founder Susan Barton spoke at the initiative's launch at Etihad Stadium thanking the guests for their support in the fight against youth homelessness. The money raised from the Lacrosse initiative will go towards helping fund Lighthouse's new home in Kensington.

Charter Hall also helped support Lighthouse by entering a yacht at the Property Industry Foundation's Charity Sailing Event.

Last year, the Lighthouse young people and Carers enjoyed a Mexican Christmas treat thanks to the **Amigos** restaurant at Carlton. The Mexican restaurant shared with Lighthouse the Christmas spirit by hosting a Christmas dinner for all Lighthouse young people and Carers at their Carlton restaurant.

Amigos owner Carolyn Dib continues to extend Amigos support by offering Lighthouse young people training and employment opportunities at their organisation. Amigos' support is invaluable in helping our young people on their journey towards interdependence.

Music was found buzzing through the ears of Lighthouse young people last Christmas thanks to **Fender Australia**. This exclusive Australian distributor of popular guitar and amplifier products rocked Lighthouse by gifting some of the Lighthouse young people with electric and acoustic guitars, amplifiers and accessories.

Fender Australia has introduced music to the lives of our young people; a truly remarkable gift.



Above The crew set sail.



Left Top l-r: Amanda Smith, Michelle Stelluto, Sian Gooden
Bottom l-r: Olivia Christie, Frank Opray, Chris Chapple, Susan Barton, Mark Jacobs, Simon Stockfeld.



Below l-r: Ryan Berman, Abe Berman, David Drysdale, Lleyton Hewitt.

Hitting a hole-in-one for charity

RedZed Lighthouse Charity Golf Day

On 11th April, golf clubs were swung in support of Lighthouse Foundation. Lighthouse's Cheltenham Community Committee organised a Golf Day to help raise funds for Lighthouse's Adult Community Transition Home in Cheltenham, where young people are provided with the necessary skills to transition into independent living.

The event, kindly sponsored by RedZed Lending Solutions, was held at the Yarra Yarra Golf Club, and saw an overwhelming number of people coming to support Lighthouse and

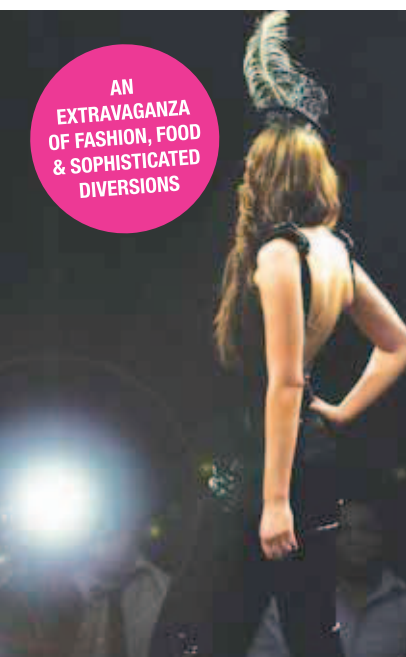
have a good time. Among supporters was Australian tennis player Lleyton Hewitt who traded in his tennis racket for a golf club for the day to help support Lighthouse Foundation.

Lighthouse would like to thank the hardworking volunteers from the Cheltenham Community Committee, Kingfisher Recruitment, sponsors RedZed and Parsons Brinckerhoff, David Drysdale (Lleyton Hewitt's manager) for his great speech, everyone who generously donated fantastic auction prizes, and all the wonderful supporters who came along and made the day a fun-filled one.



coming up

AN
EXTRAVAGANZA
OF FASHION, FOOD
& SOPHISTICATED
DIVERSIONS



This year, Lighthouse is delighted to be the charity recipient for iSelect's **2011 Fashion + Aid extravaganza**. Titled 'Strike a Pose', the event will have fashion and music colliding in an 80's inspired night of glitz and glamour.

The gala is one of the most exciting and theatrical runway shows to hit Melbourne, showcasing high profile designers, musicians and performers. And with 2009 Australian Idol winner Stan Walker

there to perform the release of his new hit single LOUD! this event is guaranteed to give guests the complete A-List experience.

The extravaganza will also give guests an opportunity to bid on an array of exclusive auction prizes. With Lighthouse being the beneficiary for the event, you can help support us by donating auction prizes, booking tables and sponsorship. So contact us for an incredible opportunity to be part of this electrifying event.

2009 and 2010 were a sell out, so with Fashion + Aid being just a few short weeks away, get in quick to secure your tickets or sponsorship for 2011.

Saturday 10 September 2011

Time: 7pm - Midnight
Where: The Palladium Ballroom, Crown
Cost: Table of 10 - \$2,400 or
\$250 per ticket
Tickets and Sponsorship/Auction Prizes:
Caroline Ford,
carolinef@lighthousefoundation.org.au



BEYOND THE BOUNCE 2011 FOOTBALL LUNCH

Hosted by Mick Molloy
and Jo Stanley
Wednesday 14th
September 2011

With the 2011 Footy Season well underway, it's time to book your table for Lighthouse Foundation's '**Beyond the Bounce**' – **Football Lunch 2011**.

This year's Footy Lunch, hosted by Mick Molloy and Jo Stanley is sure to be packed full of laughs. So join us and a squad of past and present football personalities for an exciting

discussion of the game, the players and the issues of Season 2011 over a 3 course lunch with beverages.

Game day will soon be upon us, so get in quick by getting your team together and booking a table today.

We also seek donations of prizes for the live and silent auctions, so contact us for this fantastic opportunity to showcase your brand at this key Lighthouse event.

See you at the "G".

Wednesday 14 September 2011

Time: 12pm - 3.30pm
Where: MCG Members Dining Room
Cost: Table of 10 - \$1,500 or
\$150 per person
Tickets and Sponsorship/Auction Prizes:
Caroline Ford,
carolinef@lighthousefoundation.org.au

Tickets are going fast, book now!



We are very excited to be holding the **8th Annual Art Auction** for Lighthouse.

Thanks to the artists who donated their fabulous works and our generous Lighthouse supporters, last years event raised \$72,000 and brought novice and experienced art buyers alike to ACCA for the 2010 auction.

This years Art Auction event, to be held on October 6th at Guy Abrahams Gallery in Richmond will build on the success of last year and have even more art works created by established and emerging artists. There will be a \$10 entry donation and all profits will go directly to Lighthouse Foundation.

In addition to the above, we will be inviting several well known Australian celebrities to artistically decorate a series of art bricks. The finished works can be viewed online and will also be displayed on the night for auctioning. Yes, I did say bricks! These bricks will be anything but ordinary. Thanks to artists and celebrities these bricks will be transformed into works of art!

So get in touch with your artistic side, bring a friend along, and prepare to raise your hand for homeless young people by making bids on some quality art.

Thursday 6 October 2011

Time: 6.30pm – 9.30pm
Where: Guy Abrahams Gallery
27 Gipps Street
Richmond VIC 3121
Donations/Submissions/RSVP:
Caroline Ford,
carolinef@lighthousefoundation.org.au



our supporters

Join us and make a difference!

Lighthouse relies heavily on the kind support of our volunteers, and we are always eager to meet people who would like to get involved with the Lighthouse cause.

Lighthouse is looking for more Community Committee members to help provide networks into the local community and assist in raising funds for either our Greenvale, Boronia or Kensington home. We would love to hear from you if you are keen to join a team to help Lighthouse.

So drop us an email or call, and join us in our fight against youth homelessness.

Sian Gooden, P. 03 9093 7537
siang@lighthousefoundation.org.au

David Band Condolence

David Band
25 December 1959
to 20 April 2011

Lighthouse acknowledges the remarkable contribution of David Band who passed away in April. The Board, staff and volunteers of Lighthouse Foundation express our sincere condolences to David's wife Fiona, son Alfie, and family.

David was an outstanding artist. His art and brilliant design of the Lighthouse logo has played a significant part in our organisation, and it continues to help support Lighthouse in our work continuing. His contribution to Lighthouse will not be forgotten.



Lights, Script, Action

David Bardas, writer and former owner of Sportcraft Sportsgirl and David Lawrence, has been a beacon of Light for Lighthouse. After his retirement in 1996, Bardas worked as a City of Melbourne councillor for a year during which he channelled all his earnings as a councillor, to the Lighthouse Foundation. Ever since, David's involvement and support of Lighthouse has grown considerably.

His most recent contribution to Lighthouse, is his financial support towards the Sandra Bardas City Lighthouse. Thanks to David's generous contribution, Lighthouse will soon be opening its 10th Lighthouse home which will help provide a safe and secure shelter for homeless young people.

Adding to his list of accomplishments, David Bardas has conceptualised his first play, 'Home for Lunch', written by AWGIE-Award winning writer, Rebecca Lister. This humorous play examines life after retirement, a terrifying prospect for many men. David drew from his own experience to create the concept which Rebecca realised through her own expertise as a playwright successfully illustrating that there is much to be made of life after work. The play was staged at Chapel off Chapel during June with a view to a national tour.

David has not only made his mark in the world of theatre, but his support of Lighthouse has also undoubtedly made a huge mark on the lives of our young people.



Cycle India

Travel India and support Lighthouse

Up for a challenge? How does a 13 day trip involving five days of cycling and three days of volunteer activities with children in a local Indian school sound?

In April 2012, Memorable Challenges with the support of World Expeditions will host Cycle India, a fundraising event. Participants will be required to raise \$3000 in sponsorship for this event, with proceeds coming back to Lighthouse Foundation.

Cycle India is a great opportunity to explore the sights and sounds of India while lending a hand at a local school and supporting Lighthouse Foundation.

For more information, please contact Sian Gooden, P. 03 9093 7537 or siang@lighthousefoundation.org.au.

East Malvern Community Committee making a difference

Each Lighthouse home is supported by an invaluable committee of volunteers who live or work in the local area. These Community Committees assist their home by developing community networks, supporting the young people and carer in their role and fundraising, among other things.

The small, but very dedicated East Malvern Committee have gone above and beyond their annual fundraising target. The team of six have been hard at work organising fundraising activities and fostering the support of organisations such as Septimus Jones & Lee, the East Malvern Bendigo Community Bank, MGI and the Grenda family. They have also held a number of successful fundraising activities including a night at the movies and a Bunnings Sausage Sizzle where volunteers from Septimus Jones & Lee kindly helped to cook up a storm.

The funds raised by the Committee have greatly supported the continuing operations of the East Malvern Lighthouse. A big thank you to all of our Community Committees for your support in helping us to end youth homelessness together.

Thank you There are always so many people and organisations to thank. Without their help, Lighthouse would simply not be able to continue its work. We would especially like to acknowledge these companies.

